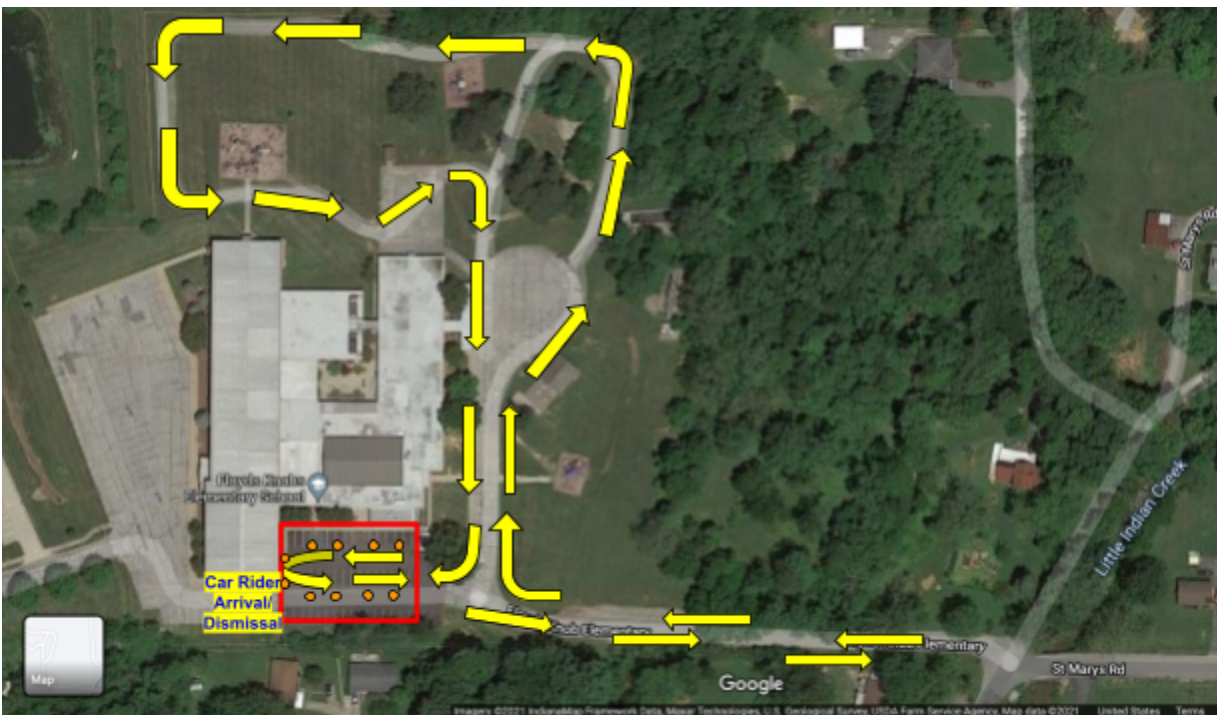


Car Rider Procedures

To ensure safety when loading and unloading,
all booster seats should be on the passenger side of your vehicle.

Arrival

- Students may be dropped off between 8:15 a.m. & 8:30 a.m.
- Car riders enter off St. Mary's Road.
- Follow the line of cars around the back of the school.
- To ensure student safety, please **refrain** from cell phone use.
- The "unload zone" is indicated by the red box on the map. Please pull all the way around by the orange cones. We will unload several vehicles at a time.



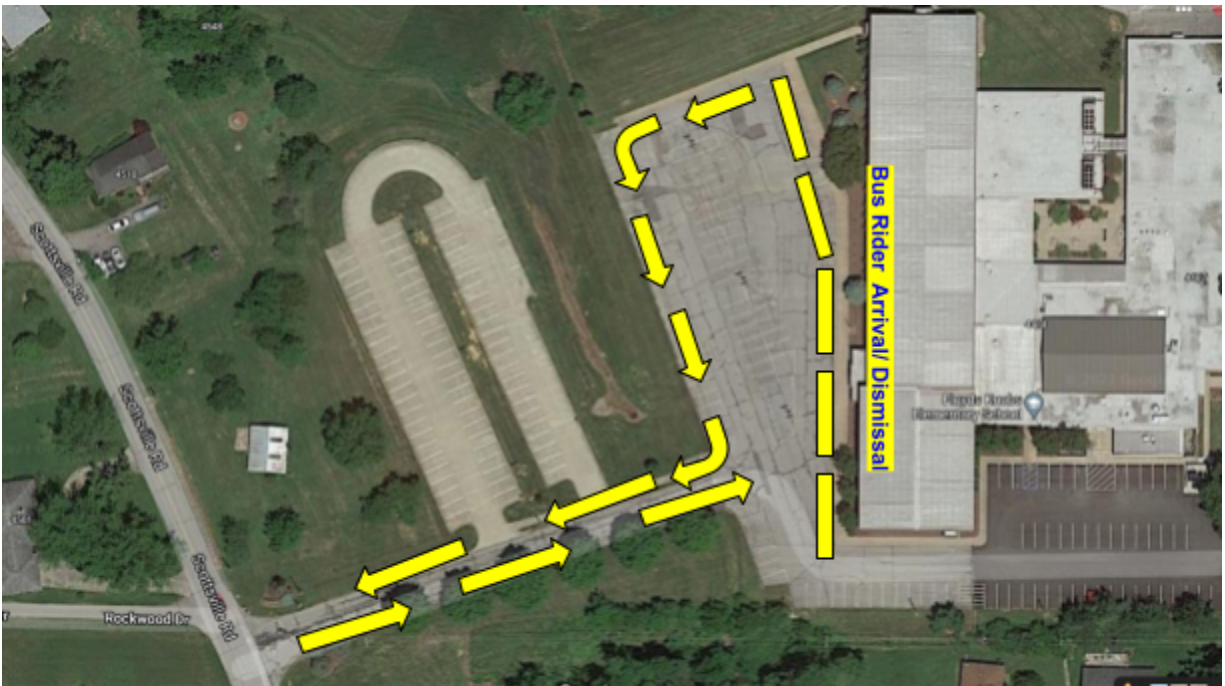
Dismissal

- Gates will open at 11:05 a.m. off St. Mary's Road.
- Have your Car Rider Name sign displayed in the front passenger window.
- Follow the line of cars around the back of the school.
- To ensure student safety, please **refrain** from cell phone use.
- Dismissal begins at 11:30 a.m.
- The "load zone" is indicated by the red box on the map. Please pull all the way around by the orange cones. We will unload several vehicles at a time.

Bus Procedures

Arrival

- Buses will arrive at the front entrance from Scottsville Road.
- Buses will line up against the school.
- Unloading of the busses will begin as early as 8:15 a.m., or whenever busses arrive after that.
- Students will go directly into the gym, where they will sit with their class.



Dismissal

- Buses will dismiss from the front entrance, using Scottsville Road.
- Buses will line up against the school.
- Teaching assistants will walk students to their busses.
- Bus dismissal will begin at 11:30 a.m.